

# Kindergarten Information Night 2024

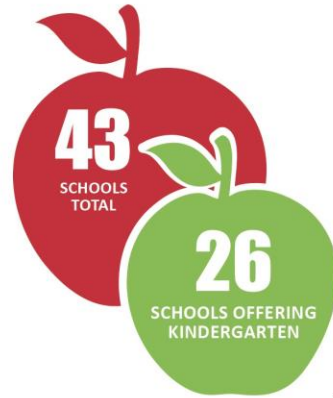




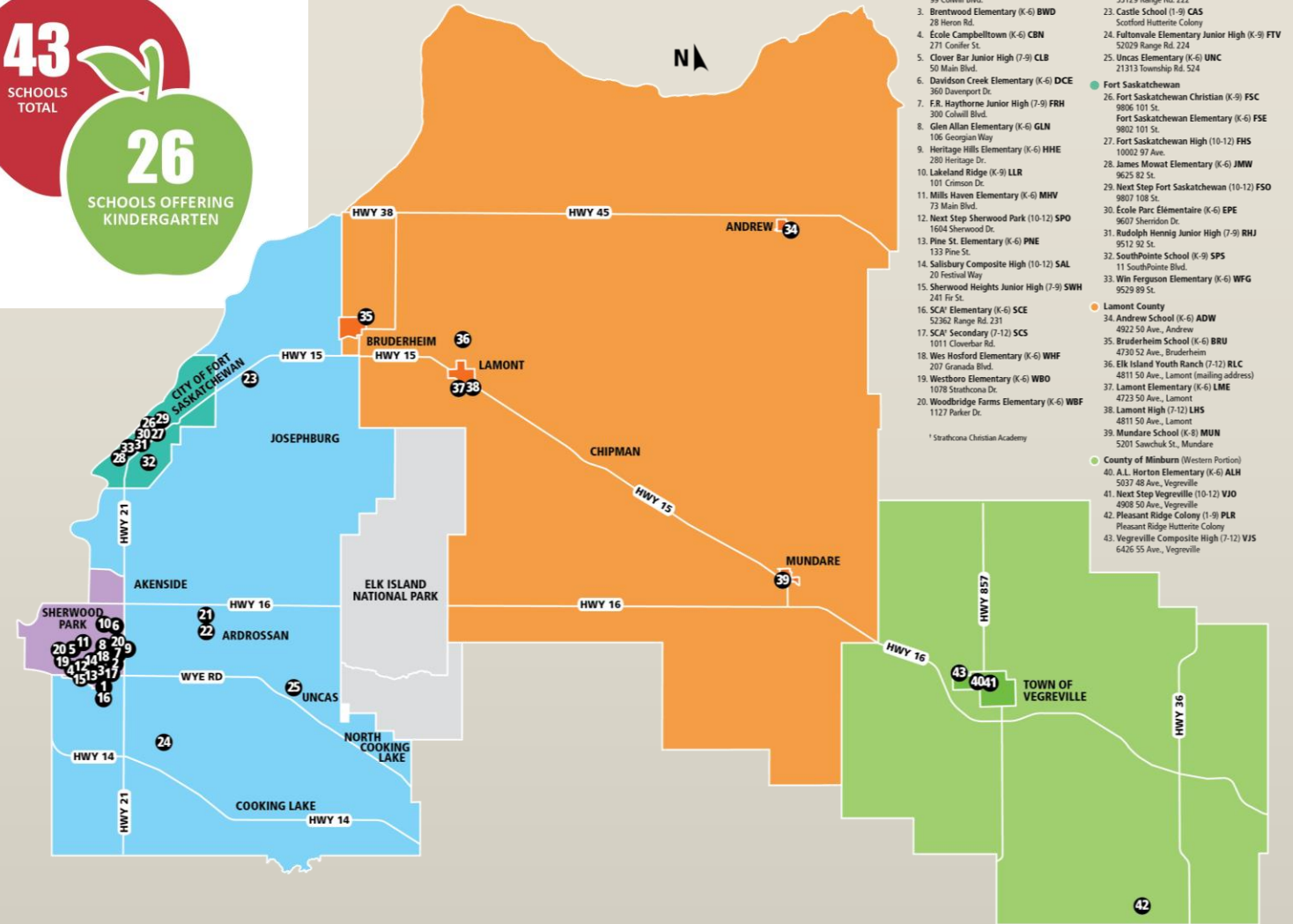
**Welcome to  
KINDERGARTEN!**

# Elk Island Public Schools (EIPS) serves:

- Sherwood Park
- Fort Saskatchewan
- Strathcona County
- Lamont County
- Western Portion of the County of Minburn



## Jurisdictional Map





# Literacy-rich, play-based programming



## Curriculum Areas

- English Language Arts & Literature
- Mathematics
- Physical Education and Wellness
- Science
- Social Studies
- Fine Arts

# New Kindergarten Curriculum

New kindergarten curriculum implemented:

- Mathematics (2022-23)
- English Language Arts & Literature (2022-23)
- Physical Education and Wellness (2022-23)
- Science (2023-24)
- French Immersion Language Arts and Literature (2023-24)

•Future kindergarten curriculum implementation:

- Social Studies (anticipated 2025-26)
- Fine Arts (to be determined)

Learn more at

[curriculum.learnalberta.ca/curriculum/en](https://curriculum.learnalberta.ca/curriculum/en)



# PowerSchool Parent Portal

- Online access to your child's progress report cards, attendance and school fees
- One Parent Portal account to link all children in the family together
- Your account follows each student as they move through the Division



Learn more at [eips.ca/parents/powerschool](https://eips.ca/parents/powerschool)

# Brightspace

- Online access to classroom updates, upcoming assignments, feedback from teachers and communication from the school and teacher, as applicable
- Separate portal access for parents and students
- One Brightspace for Parent & Guardian account to link all children in the family together
- Your account follows each student as they move through the Division

The image shows two screenshots of the Brightspace platform. The top screenshot is the login page for parents, titled "Welcome to Brightspace for Parents". It includes instructions for first-time users to click "Forgot your password?" and provides fields for "Username\*" and "Password\*" with a "Log In" button and a "Forgot your password?" link. The Elk Island Public Schools logo is visible. A note at the bottom states: "Note: You will ALWAYS use your PowerSchool Parent Portal username to access Brightspace for Parents, but your password may be different from PowerSchool. Please make a note of this when you set your password the first time you access Brightspace for Parents!".

The bottom screenshot shows a student's dashboard for "Lake Valley Elementary". The user is identified as "Hannah Bond" with a dropdown menu and a "Portfolio" link. A notification states: "Hannah may be running behind! It looks like: Read an excerpt from Chapter 7 of Black Beauty and list 10 character traits of Greer was due 1 week ago." The dashboard features three main sections: "Upcoming Work" with 1 item, "Recent Grades" with 2 items, and "Portfolio Items".

Section	Count	Item	Grade
Upcoming Work	1	Design a Parachute	✓
		Science 6-A Assignment • Due Tomorrow	
Recent Grades	2	Design a parachute	A
		Experimentation	A
		Science 6-A	

Portfolio Items section shows a card for "Metamorphosis" collected April 13, 2018, 1:11 AM.

Learn more at [eips.ca/parents/brightspace](https://eips.ca/parents/brightspace)



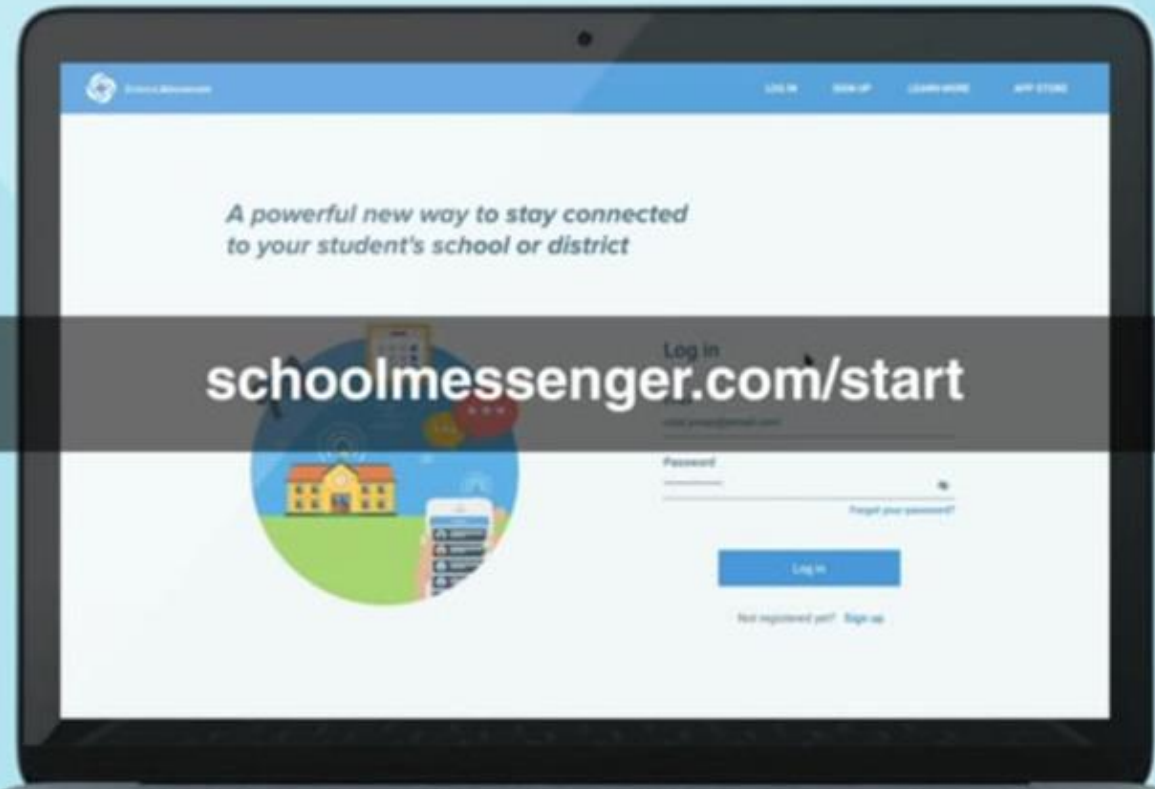
# SchoolMessenger

- EIPS uses the SchoolMessenger system for sending information to families by phone and email—including bus cancellations or delays, inclement weather, upcoming events, school newsletters, parental engagement opportunities, emergency notices and more.
- Families can manage their subscription preference through their SchoolMessenger account.
- Download the app to stay connected on the go.

Learn more at [eips.ca/contact/subscribe](https://eips.ca/contact/subscribe)



## SCHOOLMESSENGER®



# Permission Click

- EIPS uses the online Permission Click platform for many school and Division forms.
- Forms are easily accessible and fillable from mobile devices. No log in required.
- Emails will come from Permission Click

Add [notifications@permissionclick.com](mailto:notifications@permissionclick.com) to your safe-sender list to ensure required forms aren't mistakenly directed to your junk mail folder.

*Permission* **CLICK**



# Student Transportation

- Bus routes
- Bus passes
- Transportation fees
- Little Elk Island Adventure
- First day of kindergarten busing:  
September 5

Transportation fees are due June 30, 2024 and are paid online at:

[eips.ca/transportation/transportation-fees/student-transportation-online-payments](https://eips.ca/transportation/transportation-fees/student-transportation-online-payments)



# Student Transportation: Little Elk Island Adventure

Students and parents learn:

- How to be safe when around the bus
- What the Danger Zone is and where it is located
- How to board the bus and scan their bus pass
- How to sit properly on the school bus
- EIPS' Code of Conduct

Learn more at

[eips.ca/transportation/little-elk-island-adventure](https://eips.ca/transportation/little-elk-island-adventure)



# EIPS KINDERGARTEN CALENDAR 2024-25

- Regular School Day
- Early Dismissal for Students
- No School – Statutory Holiday
- No School for All Students and Staff
- First Day of Class
- No School for Students – Professional Learning/Operational Day

- SCHEDULE A:**  
Mondays, Wednesdays and select Fridays
- SCHEDULE B:**  
Tuesdays, Thursdays and select Fridays

- Important Dates**
- Aug 27 Professional Learning Day
  - Aug 28 Operational Day
  - Aug 29 First Instructional Day Calendar B
  - Aug 30 First Instructional Day Calendar A
  - Sept 2 Labour Day – Statutory Holiday
  - Sept 30 National Day for Truth and Reconciliation
  - Oct 4 Professional Learning Day
  - Oct 14 Thanksgiving Day – Statutory Holiday
  - Nov 11-15 November Break
  - Nov 11 Remembrance Day – Statutory Holiday
  - Dec 23 - Jan 3 Christmas Break
  - Dec 25 Christmas Day – Statutory Holiday
  - Dec 26 Boxing Day – Statutory Holiday
  - Jan 1 New Year's Day – Statutory Holiday
  - Jan 29 Professional Learning Day
  - Feb 6 & 7 North Central Teachers' Convention
  - Feb 17 Family Day – Statutory Holiday
  - Mar 7 Professional Learning Day
  - Mar 21 School Closure Day
  - Mar 24 - 28 Spring Break
  - Apr 18 Good Friday – Statutory Holiday
  - Apr 21 Easter Monday – Division Closure
  - May 2 Professional Learning Day
  - May 19 Victoria Day – Statutory Holiday
  - June 21 National Indigenous Peoples Day
  - June 23 Last Instructional Day Schedule A
  - June 24 Last Instructional Day Schedule B
  - June 25-26 Operational Days

**AUGUST 2024**

S	M	T	W	T	F	S
				1	2	3
4	5	6	7	8	9	10
11	12	13	14	15	16	17
18	19	20	21	22	23	24
25	26	27	28	29	30	31

**SEPTEMBER 2024**

S	M	T	W	T	F	S
1	2	3	4	5	6	7
8	9	10	11	12	13	14
15	16	17	18	19	20	21
22	23	24	25	26	27	28
29	30					

**OCTOBER 2024**

S	M	T	W	T	F	S
		1	2	3	4	5
6	7	8	9	10	11	12
13	14	15	16	17	18	19
20	21	22	23	24	25	26
27	28	29	30	31		

**NOVEMBER 2024**

S	M	T	W	T	F	S
					1	2
3	4	5	6	7	8	9
10	11	12	13	14	15	16
17	18	19	20	21	22	23
24	25	26	27	28	29	30

**DECEMBER 2024**

S	M	T	W	T	F	S
1	2	3	4	5	6	7
8	9	10	11	12	13	14
15	16	17	18	19	20	21
22	23	24	25	26	27	28
29	30	31				

**JANUARY 2025**

S	M	T	W	T	F	S
			1	2	3	4
5	6	7	8	9	10	11
12	13	14	15	16	17	18
19	20	21	22	23	24	25
26	27	28	29	30	31	

**FEBRUARY 2025**

S	M	T	W	T	F	S
						1
2	3	4	5	6	7	8
9	10	11	12	13	14	15
16	17	18	19	20	21	22
23	24	25	26	27	28	

**MARCH 2025**

S	M	T	W	T	F	S
						1
2	3	4	5	6	7	8
9	10	11	12	13	14	15
16	17	18	19	20	21	22
23	24	25	26	27	28	29
30	31					

**APRIL 2025**

S	M	T	W	T	F	S
		1	2	3	4	5
6	7	8	9	10	11	12
13	14	15	16	17	18	19
20	21	22	23	24	25	26
27	28	29	30			

**MAY 2025**

S	M	T	W	T	F	S
					1	2
3	4	5	6	7	8	9
10	11	12	13	14	15	16
17	18	19	20	21	22	23
24	25	26	27	28	29	30
31						

**JUNE 2025**

S	M	T	W	T	F	S
1	2	3	4	5	6	7
8	9	10	11	12	13	14
15	16	17	18	19	20	21
22	23	24	25	26	27	28
29	30					

**JULY 2025**

S	M	T	W	T	F	S
		1	2	3	4	5
6	7	8	9	10	11	12
13	14	15	16	17	18	19
20	21	22	23	24	25	26
27	28	29	30	31		

# EIPS offers full-day programming on alternating days.

475 instructional hours per year

- Monday, Wednesday and select Fridays, or
- Tuesday, Thursday and select Fridays

Find the Division calendar at [eips.ca/calendar](https://eips.ca/calendar)

Visit the calendar page on the school's website for school-specific dates and events.

# Kindergarten Staggered Entry 2024-25

The first four days of school, kindergarten students will come for one small-group staggered entry so that they can learn classroom routines, meet school staff, and become familiar with the learning environment in a small group setting. Mrs. Leitch has emailed families which session their child will attend for their small group staggered entry.



## Staggered Entry Days:

- ❖ Thursday, August 29
- ❖ Friday, August 30
- ❖ Tuesday, September 3
- ❖ Wednesday, September 4

- Thursday, September 5 group **B** students will attend their first full day.
- Friday, September 6 group **A** students will attend their first full day.

# Introductions

Mr. Tracey Arbuthnott  
Principal





# Introductions

Mr. Murray Howell  
Assistant Principal





# Introductions

Ms. Kayla Rusnell  
School Counsellor



# School Office Team



Mrs. Lisa Leitch  
School Registrar



Mrs. Lisa Waselenkoff  
Business Manager





# Introductions

Ms. Jennifer Appleby  
Kindergarten Teacher

## Pine Street Elementary Bell Schedule

# Bell Schedule

- Our bell schedule is available on our school website.
- The bell to enter the school is at 8:30 a.m. School starts at 8:35 a.m. and students are dismissed at 3:15 p.m.
- Early dismissal days are the first Wednesday of the month. Students will be dismissed at 2:15 p.m.

### Regular Day

<b>Entrance Bell</b>	8:30
Period 1	8:35 - 9:07
Period 2	9:07 - 9:39
Period 3	9:39 - 10:11
<b>RECESS</b>	10:11 - 10:26
Period 4	10:28 - 11:00
Period 5	11:00 - 11:32
<b>LUNCH Eating</b>	11:32 - 12:02
<b>LUNCH Recess</b>	12:02 - 12:32
Period 6	12:32 - 1:04
Period 7	1:04 - 1:36
Period 8	1:36 - 2:08
<b>INTERNAL BREAK</b>	2:08 - 2:11
Period 9	2:11 - 2:43
Period 10	2:43 - 3:15
<b>DISMISSAL</b>	<b>3:15</b>

#### PALS Schedule (Mon - Thurs)

<b>AM Class</b>	8:45 - 10:55
<b>PM Class</b>	12:25 - 3:15

### Early Dismissal

First Wednesday of each Month

<b>Entrance Bell</b>	8:30
Period 1	8:35 - 9:01
Period 2	9:01 - 9:27
Period 3	9:27 - 9:53
<b>RECESS</b>	9:53 - 10:08
Period 4	10:08 - 10:34
Period 5	10:34 - 11:00
<b>LUNCH Eating</b>	11:00 - 11:31
<b>LUNCH Recess</b>	11:31 - 12:02
Period 6	12:02 - 12:28
Period 7	12:28 - 12:54
Period 8	12:54 - 1:20
<b>INTERNAL BREAK</b>	1:20 - 1:23
Period 9	1:23 - 1:49
Period 10	1:49 - 2:15
<b>DISMISSAL</b>	<b>2:15</b>

#### PALS: Early Dismissal

No PALS classes



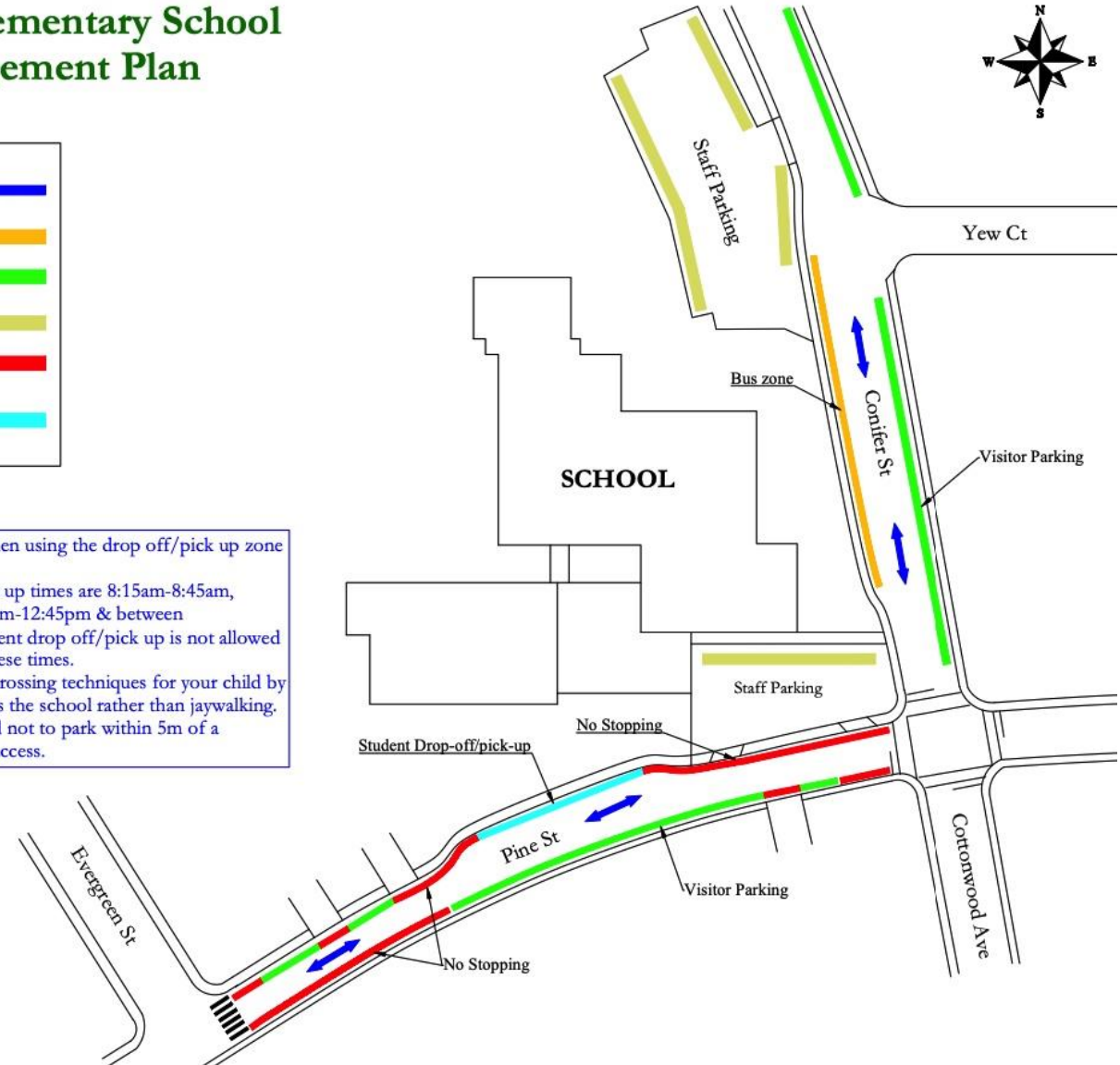
# Student Drop Off and Pick Up

- Please stay in your car in the drop off/pick up zone in front of the school.
- Demonstrate road safety for your child by using the crosswalks.
- Bus zones and staff parking lots are not intended for student drop off and pick up.

## Pine Street Elementary School Traffic Management Plan



- Please stay in your car when using the drop off/pick up zone in front of the school.
- School bus drop off/pick up times are 8:15am-8:45am, 11:00am-11:30am, 12:15pm-12:45pm & between 3:00pm-3:30pm and Student drop off/pick up is not allowed from Bus Zone during these times.
- Please demonstrate safe crossing techniques for your child by using crosswalks to access the school rather than jaywalking.
- Parents are also requested not to park within 5m of a crosswalk or parking lot access.



# Typical Kindergarten Day

- In this video, Ms. Appleby shares what makes up a typical day in kindergarten.
  - [https://www.youtube.com/watch?v=4\\_goppLE9Og](https://www.youtube.com/watch?v=4_goppLE9Og)





# School Supplies

- The Kindergarten School Supplies list is available on our school website.



Tools for School is a program from the United Way that provides backpacks filled with school supplies to students in kindergarten to Grade 12 whose families have limited resources. The supplies provided may not be everything that's on your child's supply list, but it's a start.

If you would benefit from the Tools for School program, contact the school office.

# School Fees

- School fees are paid online through the PowerSchool Parent Portal.
- Fees are assessed at the start of the year and approved by the Board of Trustees.
- Others may be added throughout the year as your child takes part in various activities, such as field trips, hot lunch, school performances, etc.
- Fees are generally due within 30 days of being assessed
- Fee waiver policy – If circumstances exist where you are unable to pay your fees, you can apply to have certain fees waived. The application deadline is December 15.

Learn more at [eips.ca/schools/fees](https://eips.ca/schools/fees)







# Parent Involvement

- School Council – Attend meetings to stay informed on school events, share ideas, ask questions and learn about all the great things happening at Pine Street Elementary.
- Fundraising Society – Have a fundraising idea? Want to get involved to support a school initiative? Reach out to our Fundraising Society at [pinestreetsvp@gmail.com](mailto:pinestreetsvp@gmail.com).
- Parent volunteers – Ms. Appleby loves having family helpers in the classroom. We believe Parents/Families are partners.



# Preparing for Kindergarten



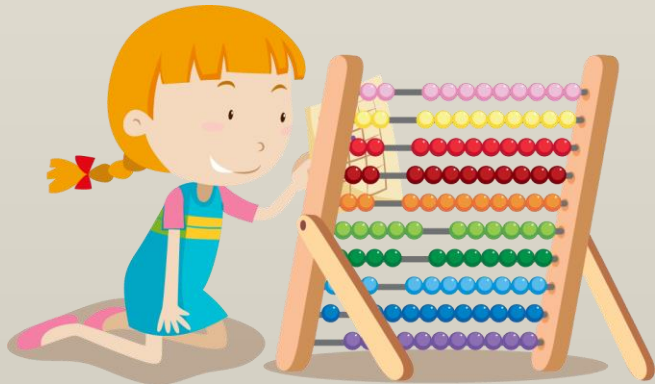
Communication and literacy



Motor skills



Social-emotional development



Numeracy



Self-help skills



Eye See, Eye Learn

# Preparing for Kindergarten

- Literacy: explore print in everyday life, provide opportunities to interact with letters, recite rhymes and songs, read together.
- Numeracy: explore shapes, count often, simple dice and card games, practice sorting.
- Motor skills: printing and drawing, creation station, puzzles, outdoor play.
- Self-help: age-appropriate chores, build independence, practice dressing/undressing outdoor clothes and putting shoes on/off.
- Social emotional: stimulate curiosity and enthusiasm for learning, be positive about school, build emotional vocabulary, navigate feelings of disappointment and frustration, practice turn-taking and sharing.





## Preparing for Kindergarten

- Book an eye assessment/exam before your child start kindergarten to diagnose any vision or eye-health problems.
- Visit these sites for more information:
  - <https://www.eips.ca/programs-services/early-learning/kindergarten/preparing-for-kindergarten>
  - <https://www.eips.ca/programs-services/early-learning/kindergarten/frequently-asked-questions>



## Preparing for Kindergarten Series

- EIPS, together with local partners, is planning a series of videos and resources for kindergarten families to help prepare for the year ahead.
- Families will receive information through a series of emails sent in May and June.
- Watch your inbox for details. Prizes available to be won!

## Early Years Evaluation – Teacher Assessment (EYE-TA)

- Administered in the fall and families receive a copy of their child's results.
  - Uses teachers' regular observations and informal assessments in a play-based environment.
  - Helps determine a child's progress and development in five key areas:
    - Awareness of self and environment;
    - Social skills and approaches to learning;
    - Cognitive skills;
    - Language and communication; and
    - Physical development
  - Assessment findings used to help plan instruction for the entire class, for small groups and for individual student's needs.
- § Parent sessions providing more details and explanation will be available in the fall





## Helpful Links

- [eips.ca/kindergarten](https://eips.ca/kindergarten)
- Facebook: [facebook.com/ElkIslandPublicSchools](https://facebook.com/ElkIslandPublicSchools)
- School Website: [www.pinestreet.ca](https://www.pinestreet.ca)
- Twitter: @PNE School
- Ms. Appleby's Classroom Twitter: @MrsAppleby\_k
- Alberta Education curriculum: [curriculum.learnalberta.ca/curriculum/en](https://curriculum.learnalberta.ca/curriculum/en)



# Specialized Supports Informed Consent

## School and Program Preference

Enrolling Grade required i

Kindergarten

### Review Kindergarten Specialized Supports Informed Consent

I have read and understand the Kindergarten Specialized Supports Informed Consent. required

Please choose from the two options below regarding Kindergarten supports screening for your child. required

Accept Screening

Decline Screening

Refer to the [Kindergarten Calendar](#) information for the 2024-2025 schedule options, then return to this form and select your kindergarten schedule preference. The selected preference is taken into account but is not guaranteed.


## Speech-Language Pathology (SLP) Services

- SLPs in kindergarten provide the following services, as needed:
  - Informal classroom-based speech and language screening
  - Speech and language assessment to identify need for further services
  - Followup intervention or consultation for children transitioning from preschool programs
  - Direct intervention and consultation based on identified needs
  - Parent consultation

## Occupational Therapy (OT) Services

- OTs informally screen students' participation in the classroom setting and provide universal strategies to the classroom staff.
- Service is primarily consultative, providing resources to classroom staff and parents when needed. Students with mild to moderate needs will be primarily served through these general classroom suggestions.
- OTs may have more direct involvement with children who have significant needs in the areas of self-care, regulation and motor skills.

# Family and Community Services



**Sometimes Life is Complicated**

Lonely  
Stressed  
Bills  
Parenting  
Overwhelmed  
Relationships  
Housing Options  
Safety

Call 780-464-4044 or visit [strathcona.ca/wellbeing](http://strathcona.ca/wellbeing)



**Visit:** [strathcona.ca/fcs](http://strathcona.ca/fcs)

**Phone:** 780-464-4044

**Location:** 401 Festival Lane,  
Sherwood Park (Community Centre,  
Second Floor)

**Office Hours:**

Monday, Wednesday and Friday

8:30 a.m. to 4:30 p.m.

Tuesday and Thursday

8:30 a.m. to 8 p.m.

# Is my child ready for Kindergarten?

## **Family Resource Network: Ages and Stages Questionnaire (ASQ)**

Starting school is a big change for many children and parents/caregivers play a critical role in supporting their success. The ASQ is one tool that might help.

### **What is it?**

- A series of questionnaires designed to help you monitor your child's physical, mental, and emotional development at regular intervals from 2 months to 5 years old.

You can complete both the Ages and Stages Questionnaire (ASQ-3) and the Social-Emotional Questionnaire (ASQ:SE-2) online at **[strathcona.ca/agesandstages](http://strathcona.ca/agesandstages)**.

Once completed you will be contacted by a Family Resource Facilitator with the results and provided additional information to continue promoting your child's development.

**Questions?** Email [familyresourcenetwork@strathcona.ca](mailto:familyresourcenetwork@strathcona.ca) or call 780-464-4044

# Questions?

Contact the school  
at 780-467-2246.

We look forward to  
seeing your child  
and getting to  
meet our new  
families.

